



**LIVE
WILDFIRE
READY**

Building a Fire-Adapted Redhill Forest

What is a fire adapted community

A **Fire-Adapted Community (FAC)** is a community that has taken proactive steps to live safely with wildfire. It is designed, maintained, and prepared to reduce the risk of wildfire damage while ensuring residents know how to respond when fire occurs. Rather than relying solely on firefighters, a fire-adapted community takes responsibility for its own protection through education, mitigation, and collaboration.

Key Elements of a Fire-Adapted Community:

1. **Fire-Resistant Homes & Structures**
2. **Fuel Reduction & Forest Health**
3. **Emergency Preparedness & Evacuation Planning**
4. **Community Involvement & Partnerships**

By implementing these strategies, Redhill Forest can significantly reduce its wildfire risk, protect property values, and create a safer, more resilient community.

Redhill Forest is a beautiful place, but like many forested communities in the West, we face increasing challenges from wildfires and insect infestations, particularly the spruce budworm. The good news is that we are not powerless. By working together, we can take proactive steps to make Redhill Forest a fire-adapted community and safeguard our trees from devastating outbreaks.

Tonight, we'll cover two critical topics:

1. **Fire Adaptation & Mitigation** – What it means to be a fire-adapted community and how we, as property owners, can reduce wildfire risk.
2. **Spruce Budworm Abatement** – How this pest threatens our forests and what we can do to manage its impact.

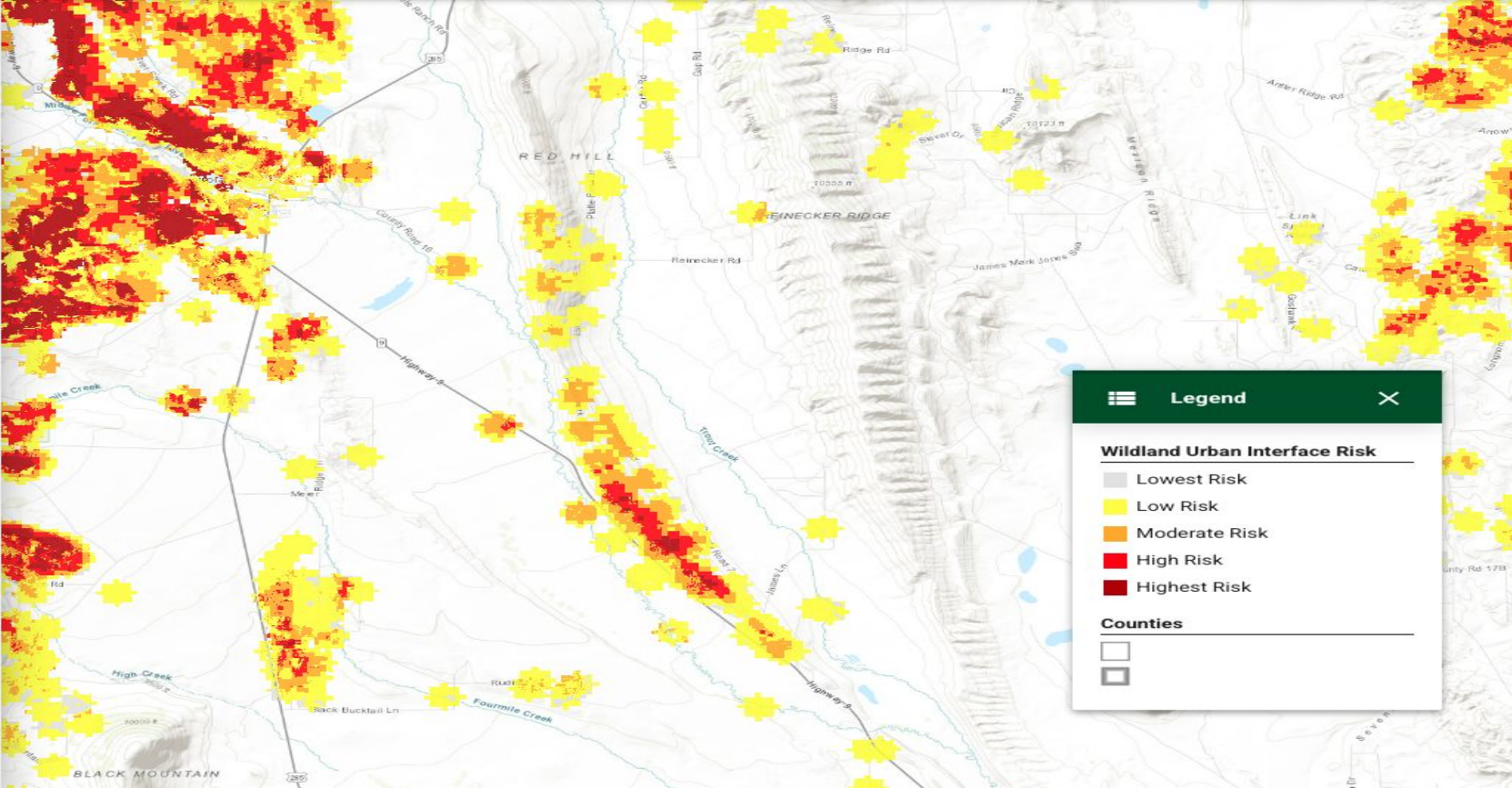
Know your wildfire risks

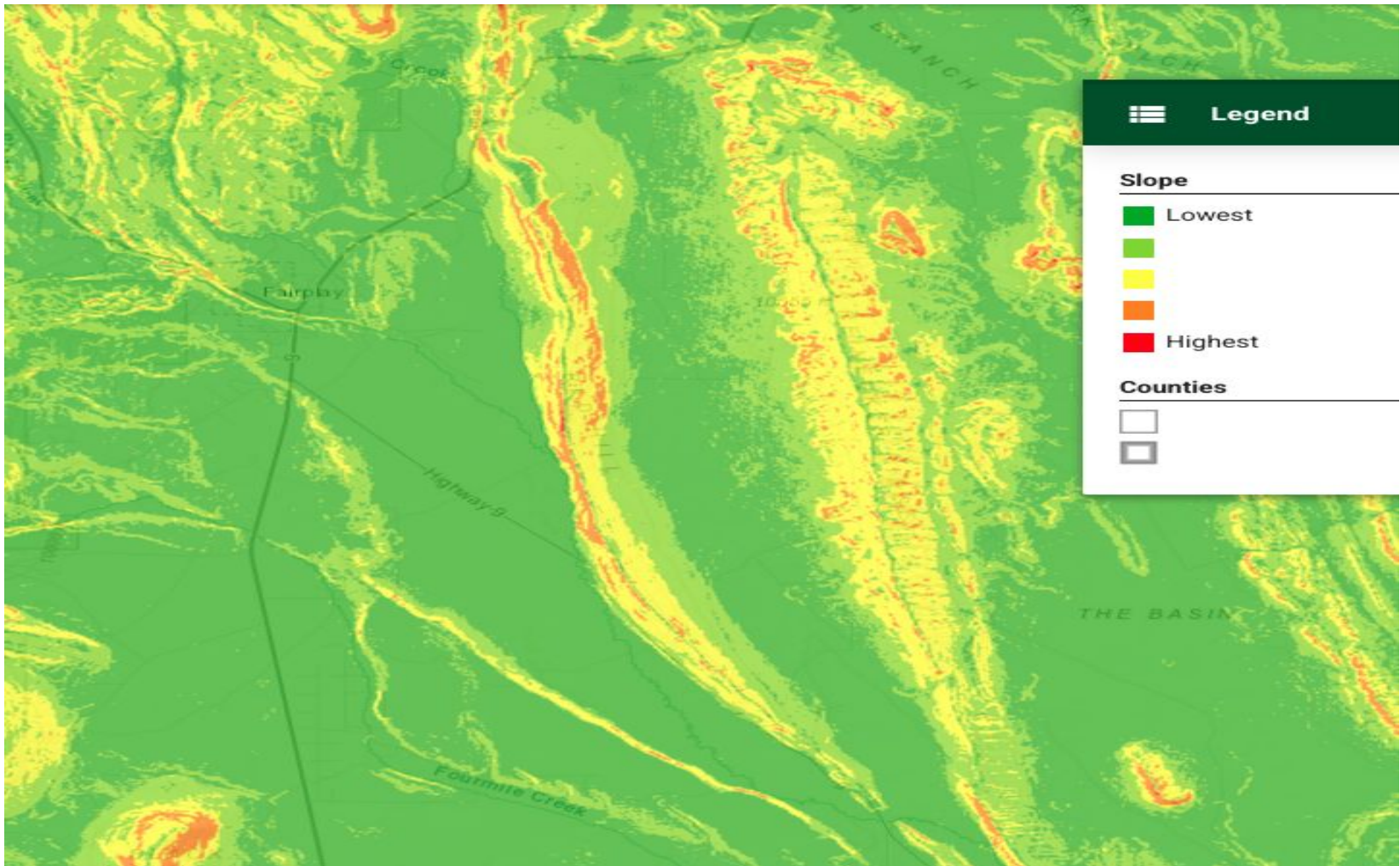
It is important for members of Redhill Forest to understand they live in a Wildland Urban Interface. (WUI). The WUI is a geographically defined area where houses or businesses are in or near mixed topographical and geographical features with various timber, brush, and grass species. This area poses a greater risk to people and their property.



The **Weston Pass Fire** was a wildfire that burned near [Granite, Colorado](#) in [Park County](#). The fire burned a total of 13,023 acres. It was started by a lightning strike on the morning of June 28, 2018

Redhill Forest WUI Risk



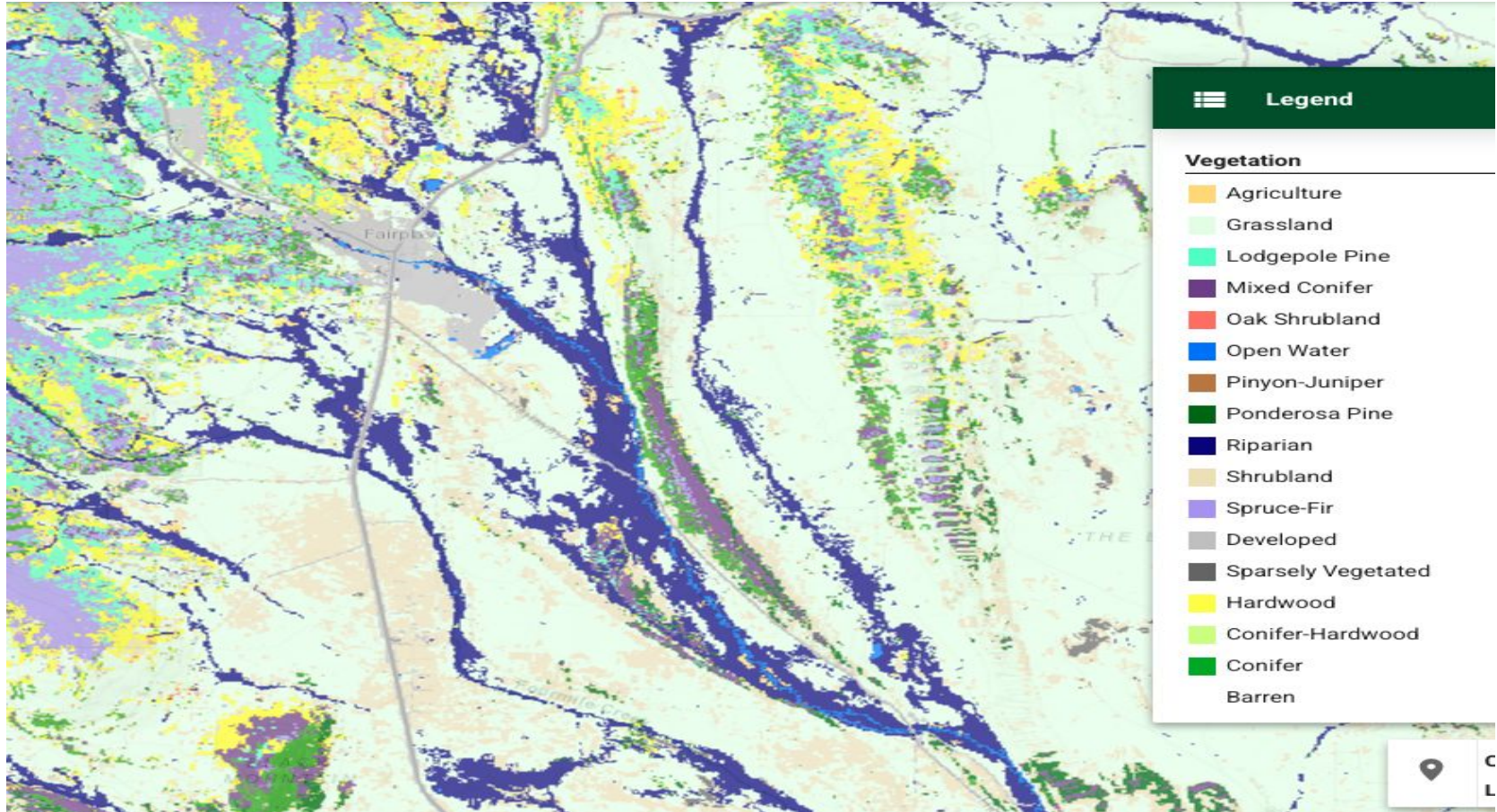


Understanding the Spruce Budworm Infestation

- The spruce budworm is a caterpillar that defoliates Douglas fir and spruce trees.
- If untreated, it weakens and kills trees, increasing fire risk.
- Spraying over all wooded areas in late May will prevent further damage.



Vegetation in and around Redhill Forest



Symptoms of Infestation

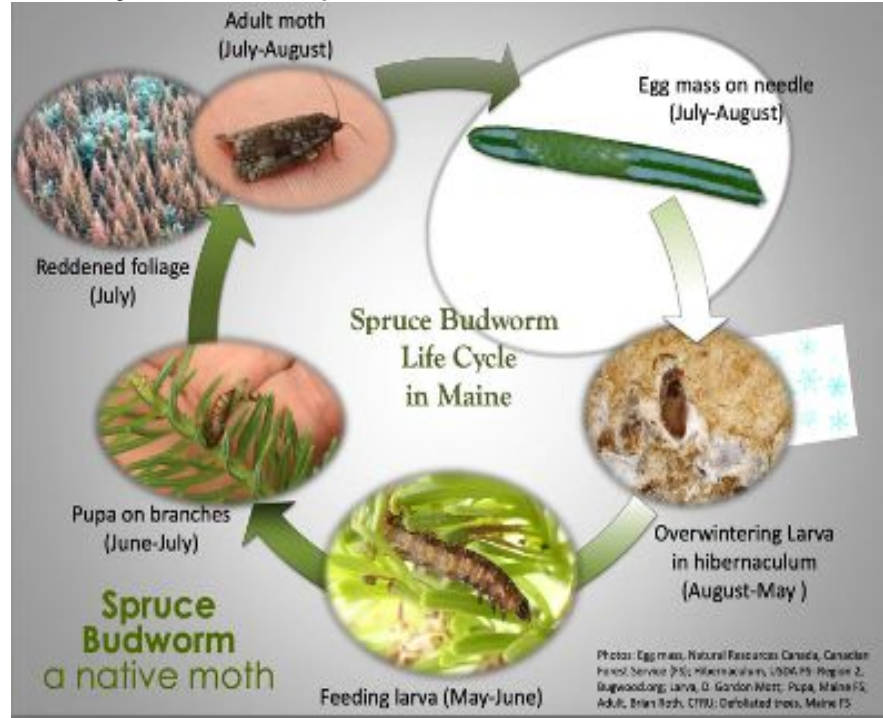
Dead branches or sparse foliage may indicate feeding during previous years. Budworms have the potential to consume **all** new growth on the host tree. During outbreaks of three or more successive years, trees may die. Budworms create ideal conditions for other insect and disease invasions.



This year is critical!

–if we don't act many trees will die, making fire danger even worse.

Life Cycle of the Spruce Budworm



Actionable steps to reduce risks

Drones will spray approximately 2302 acres with *Bacillus Thuringeiensis* (Bt)

Proposed spray area



Bacillus Thuringiensis (Bt): What Is It, how does it work to kill pests, is it safe?

What is it?

(Bt) is a naturally occurring, soil-borne bacteria that has been used since the 1950s for natural insect control. When the bacteria is consumed by certain insects, a toxic crystal is released in the insect's highly alkaline gut, blocking the system which protects the pest's stomach from its own digestive juices.

How does it work?

The stomach is penetrated, and the insect dies by poisoning from the stomach contents and the spores themselves...Before it can lay eggs.

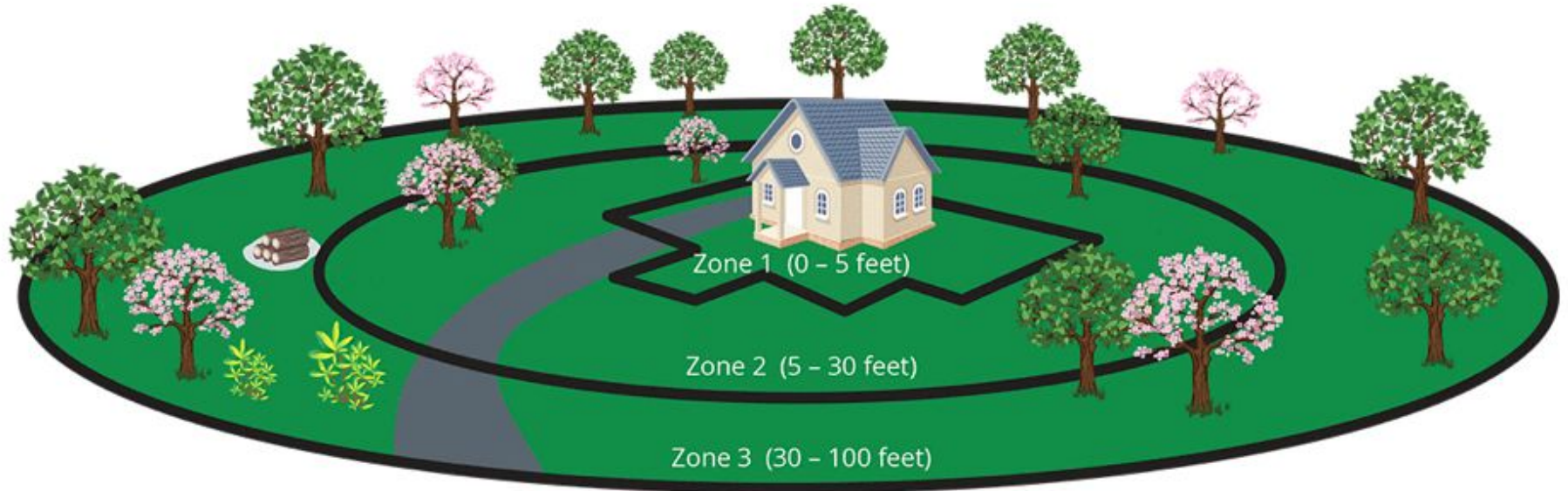
Is Bt safe for humans, pets, fish, or other animals?

Bt harmless to birds, fish, and mammals whose acidic gut conditions negate the bacteria's effect.

Actionable steps you can take to reduce risks:

Defensible space fire zones

Areas of landscaping to consider include the 100-foot area around the home, areas of greenspace within, and wildlands surrounding a community. Landscaping around homes and other buildings and infrastructure should be especially well maintained. Research shows that maintaining this area properly can improve home survival.



Zone 1

0-5 feet

Includes the structure, deck/patio/balcony or other outside entertaining space as well as fencing that is attached to the home and the immediate landscaping from the home to 5 feet away.

- Remove all combustible materials like wood mulches, dead or dry vegetation, and leaves and pine needles from roofs and gutters.
- Trim tree branches that hang over the roof, eaves and chimney.

Zone 2

5-30 feet

Includes the area from 5 feet to 30 feet away from the home, including the property and all outbuildings.

- Keep this area lean, clean and green by pruning and removing dead and dying branches from well-spaced bushes and trees.
- Make sure to keep this area well maintained and watered during a hot, dry summer.
- Stack wood piles on bare or gravel areas or in an enclosed shed at least 30 feet from the home.

Zone 3

30-100 feet

This is the area farthest from the home, extending from Zone 2 to your property's boundary from 30 to 100 feet. Reduce fuels by thinning and spacing vegetation vertically and limbing up trees horizontally to interrupt fire's path and keep flames small and on the ground.



Protect Your Property

Why Is Defensible Space Important?



Community Resources and support

Emergency Alerts



Sign up for Park County Notify Me

- Fire ban notifications
- Wildfire notifications
- Hazardous weather notifications

<https://www.parkcountyco.gov/list.aspx>

Sign up for FEMA ALERTS

<https://www.ready.gov/wildfires>



<https://www.nwfpd.org>

- Home
- About ▾
- Fire Code & ISO Info
- Governance ▾
- Public Events
- Burn Permit & Burn Ban Info
- Fire Prevention ▾
- Ask the Fire Chief
- Hiring Opportunities
- Contact Us

FIRE PREVENTION

FIRE PREVENTION

WILDLAND FIRE
INFORMATION

CHIPPING PROGRAM

Chipping Program

You may call the station to reserve a spot for this year's chipping list.

You can also bring slash to the [Fairplay Slash Site](#) located just north of NWFPD's Station 2 on HWY 285 in Fairplay.

Link to the location of the **Fairplay Transfer**

Station : <https://goo.gl/maps/rgkcwS9QoTLiwQsD6>



FAIRPLAY SLASH COLLECTION SITE

OPEN SATURDAYS 9AM-4PM
May 25 - Aug 31, 2024

Consult the CUSP website for updates <https://fairplayslashsite.com>

Or call the CUSP office at 719-748-0033

\$20 per pick-up load or equivalent

CASH OR CHECK ONLY

21925 Highway 285

At Mountain View Waste
Transfer Station Entrance

PLEASE

Maximum length = 6 feet
Maximum diameter = 8 inches
NO Stumps, Roots, Lumber
NO Weeds, Grass
NO Tires, Dirt, Trash Metal
NO Pinecones, Bark, Pine
Needles not on branches





BAILEY Slash Collection Site

Open

May 3—Oct 27, 2019

Friday, Saturday, Sunday

9:00 AM—3:00 PM

Holiday closures

May 26, July 5, and September 1

Located at US Hwy 285 and County Road 72

**FEE: \$15.00 per pickup load for Park
County Residents, \$20 for non-residents**

Professional Resources

Professional Resources	Phone	Website	Defensible Space Assessment	Tree pruning, removal	Chipping	Slash & Lot clearing
Neighborhood Arbor Care	303.669.0949	www.neighborhoodarborcare.com		X	X	
Splintered Forest Tree Service	720.306.9384	www.splinteredforesttreeservices.com	X	X		
Colorado Trees	303.856.4285	www.coloradotreetrimming.com		X		
Elk Mountain Tree Service	720.722.0699	www.elkmountaintreeservice.com		X		
Arbor Tech	303.279.9337	www.arbortechtreeco.com		X	X	X
TSH Tree Services	970.485.4969	www.tshtreeservice.com		X	X	X
Cavebuug	970.406.2724	www.cavebuug.com		X	X	X
Action Tree Removal	720.404.0421	www.action-tree-removal.com	X	X	X	X

Wildfire Readiness and Information

Prepare your home and your family for wildfires. We all know Park County, and much of Colorado is at risk of wildfires. The good news is, there are pretty easy steps we can take to protect our homes, properties and one another.

Please visit our Redhill Forest Website for links to resources and information:

<https://www.redhillforesthwa.com/fire-and-forest>



“After seeing our home following the fire, it looked like it was protected by a guardian angel.”

More useful links and videos:

Please visit Colorado's new [Live Wildfire Ready](#) website for resources and information.



Colorado State Forest Service Defensible Space Guidelines:

[CSFS Website](#)



FEMA Wildfire Resources:

[USFA Wildfire Mitigation](#)

Defensible Space contractors:

<https://www.jeffco.us/DocumentCenter/View/1795/Defensible-Space-Contact-Sheet-PDF>

Colorado Homeowners Insurance tool kit:

<https://doi.colorado.gov/homeowners-hoainsurancetoolkit>

Short videos that demonstrate why and how to create defensible space around your home.

<https://youtu.be/zx9-pZvKW2U?si=4-RQYGZQYPFCdPhH>

<https://youtu.be/gW4ojYJtGbA?si=1NdPg2YmSPqn1U1D>

https://youtu.be/_eyl87l3wqk?si=MI4BhzCn1kqXOrGc